

Friday 28th July, 2017

Maps of the playground



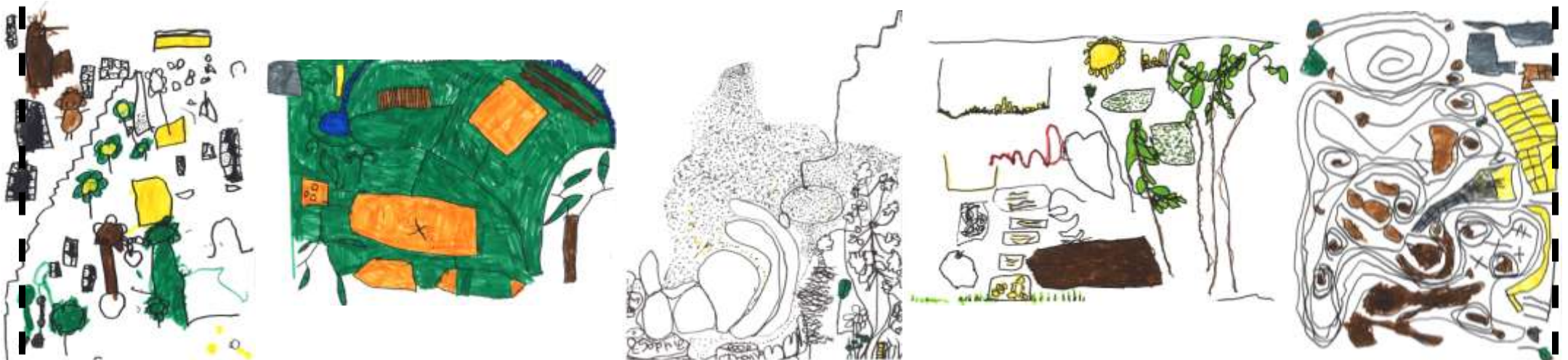
Luca

Bennett

Leja's

OSCAR

This week the children have completed their mapping of the large playground. Each child has interpreted the spaces differently and they have added such thoughtful detail to their work over time.

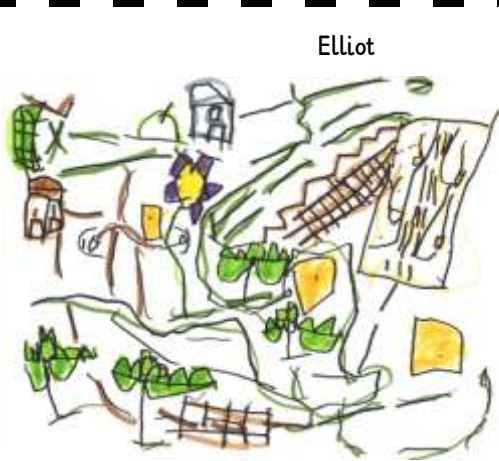


Jeremiah

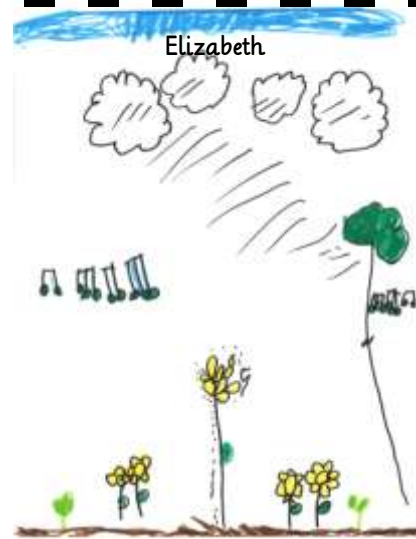
Riley

Gabriella

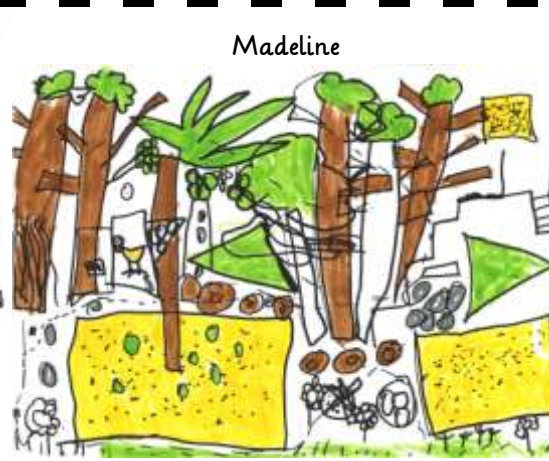
Nicholas



Elliot



Elizabeth



Madeline



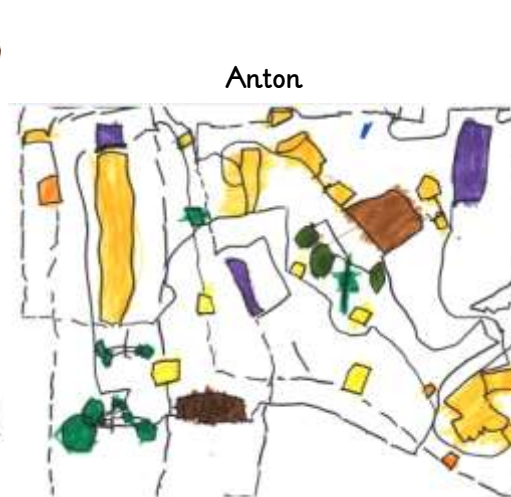
Archer



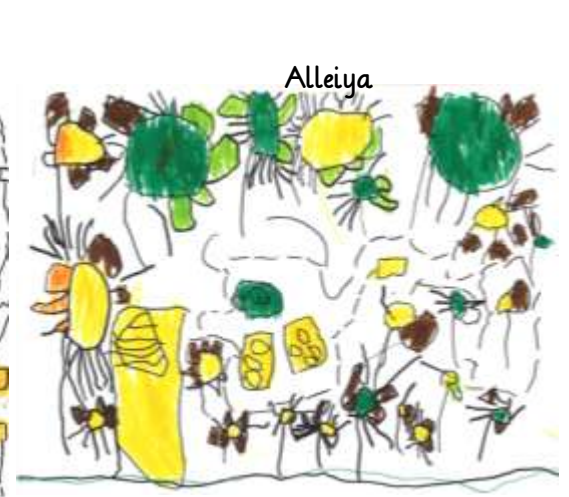
Ana



Minka



Anton



Alleiya



Edward



Alicia

Spatial thinking can be described as 'seeing in the mind's eye'. Spatial skills are what allow us to picture the locations of objects, their shapes, their relations to each other and the paths they take as they move (Outcome 5, EYLF). Maps support spatial thinking by helping children visualize where objects, places, cities, and countries are in relation to one another (Outcome 2, 4 EYLF). Maps have the ability to help children discover their place in the world. These illustrations are also a representation of the 'children's spaces of wonder and their places of wonder'.